

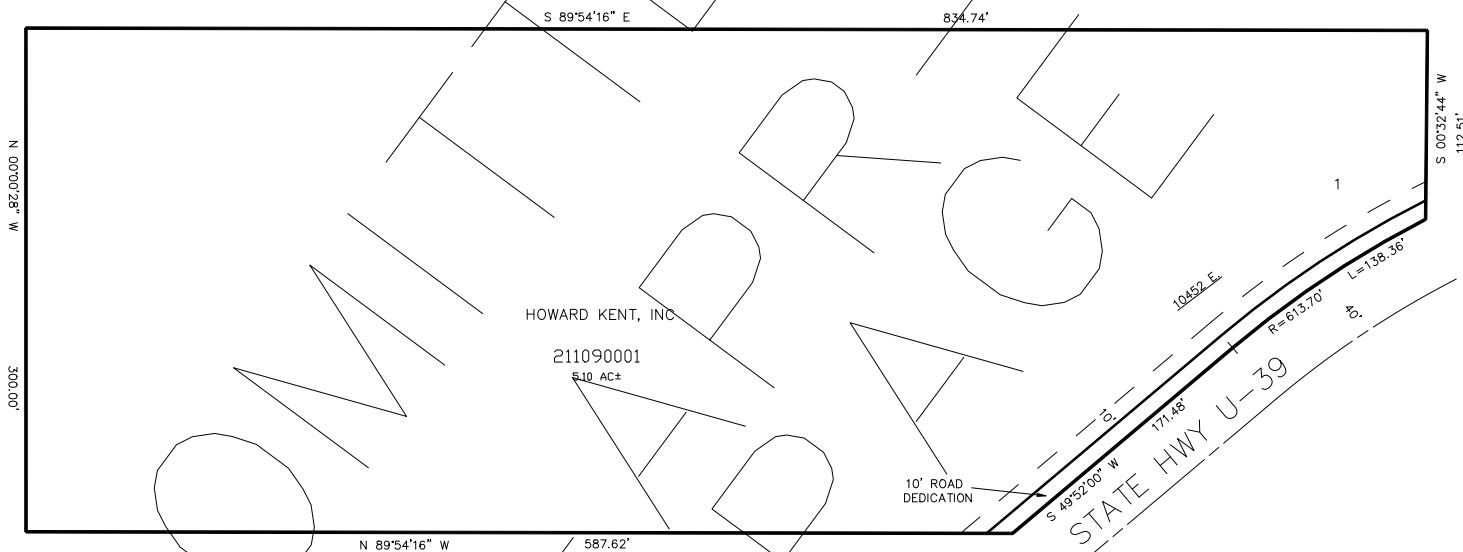
PART OF THE NW 1/4 OF SECTION 14, T.6N., R.2E., S.L.B. & M.  
**BRIAN & BARBARA EDWARDS SUB 1ST AMENDMENT**

IN WEBER COUNTY

TAXING UNIT: 318

SCALE 1" = 60'

SEE PAGE 18



SEE PAGE 18

10' UTILITY & DRAINAGE EASEMENTS EACH  
 SIDE OF PROPERTY LINES AS INDICATED  
 BY DASHED LINES EXCEPT AS OTHERWISE  
 SHOWN.

FOR COMPLETE ENG DATA SEE  
 ORIGINAL DEDICATION PLAT IN  
 BOOK 63, PAGE 44 OF RECORDS.